

續

泉

匯

續泉匯貞集卷一

歛 鮑 康子年

同編

利津李佐賢竹朋

無考正品



四朱陰文小錢二品次尤小背平殊厚重圓孔面大背小字畫方整用品錢無作陰文者此錢製甚精陳壽卿新得於齊地前人所未見也



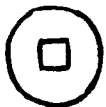
周元極小錢亦曰通寶按周元錢品類繁多世多重之此等小錢頗與當時錢不類



元豐通寶隸書不類宋錢背元符通寶橫置則確係宋錢不可解或外國仿鑄而以元符錢作幕者歟



趙寶重興錢背壬申不晰舊譜無徵考七國之後惟前有劉曜以趙爲國號未聞鼓鑄後有石勒亦號趙曾鑄豐貨錢此與豐貨錢形製不類外此別無號趙者按石宏石虎石鑒等屢改年號或伊等所爲文曰重興殆謂又新鑄作歟 子年云唐以前錢無正書前譜之永安一百一千亦未必果屬涼鑄此品制作簡陋絕無古意寶字作宝背文紀年其爲外國私鑄無疑



開丹聖寶錢諸譜未載按遼本契丹改稱遼聖宗耶律隆緒統和元年當宋太平興國八年復號大契丹此錢文曰開丹或取契丹開國之義歟子年云外國錢多以聖寶爲文此品制甚簡率亦必外國所鑄



定天之寶小錢制作文字與元錢酷肖亦厚重



聖歷元寶小錢圓孔亦絕類元錢惟襲用武周年號不可解以
上二品俱胡石查藏

無考別品



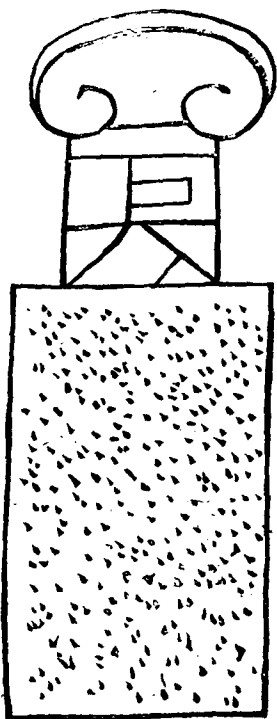
箱館通寶錢背文安圓孔鐵質或疑安南所鑄然未可定箱館
二字亦未解

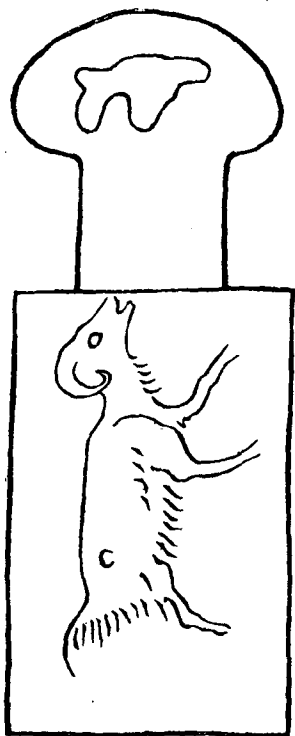


五十錢穿上一星五字中畫直而不曲非莽大泉所改前譜有
二十十等錢皆此類也



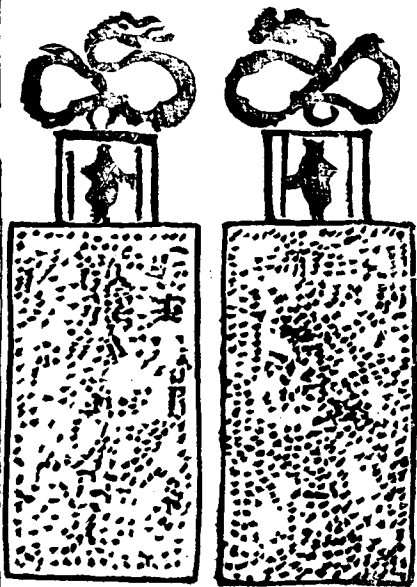
兩面文字俱不可識類蒙古篆書石查所收元錢有此一品
變體奇品

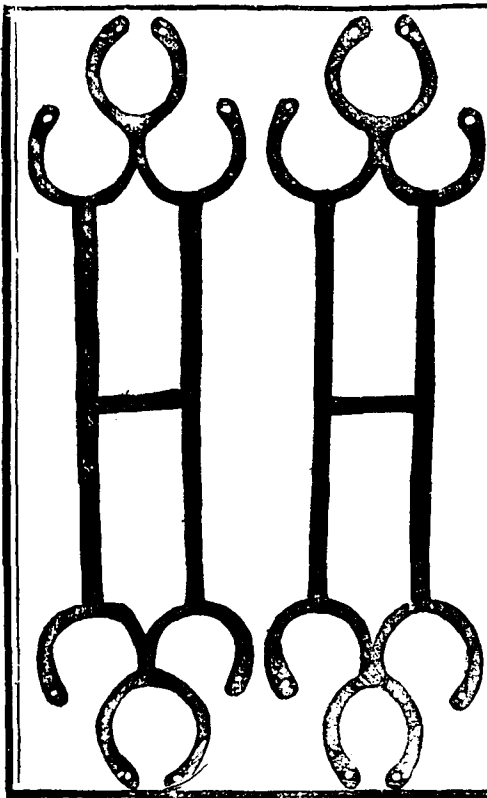




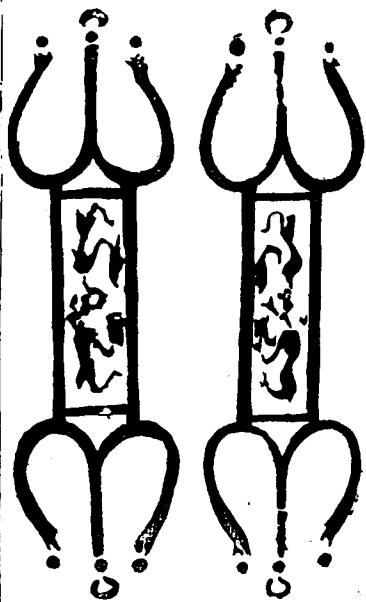
漢厭勝錢面粟文同常品上有巨万字背作羊形異按漢洗大吉羊三字者兼畫羊形此錢與洗當屬同時之製取吉祥之義

此品形製較小





此品未必屬泉幣然舊譜有神農棘幣之說雖不可信亦無妨
姑存以備異品子年舊藏



此品亦其小者

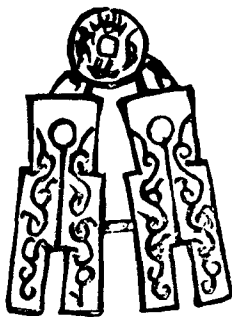
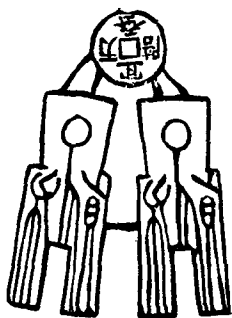
厭勝正品



大泉五十背文石查釋作宜泉万倍口之土星長壽大利云七
星卽星字鉤文卽長壽二字倍利叶韻姑存其說子年舊藏



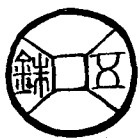
大泉五十背長宜子孫傳形隸書次宜官秩吉在下及右上及
 左有星斗形



兩貨布連綴背作龍文上有小錢曰宜蚕万陪倒書泉背四生
 肖形



五銖傳形上下有龍鳳文背宜我子孫篆書



五銖大於常品面四出文背上巳字下蛇形生肖類也



開元通寶背龍鳳錢頗類周元錢製



續泉匯

卷一

八

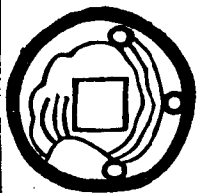
軋封泉寶背文福德長壽形製絕大色澤甚古非近代偽鑄



天策府寶背龍鳳形亦古樸非偽鑄



大定錢左右犀角及雙角形背上下方響及銀錠形左右不斲



泰和重寶大錢一背雲頭次犀角形仿大觀錢製



正德雙龍錢前譜載有大者似皆非明錢今傳世龍文龍鳳等錢大小不等錢幣考已疑其僞纂考所載於龍鳳之外又有花紋星月龜蛇七星等製不可枚舉明時歷代錢並無許多品式何以正德獨異其爲後鑄無疑 子年云正德正用品絕無僅有而龍鳳等品如是之多流俗所珍不足論也

厭勝古語



王僕印紐錢面文大勝哉得泉財益富昌宜牛羊背葆父母利
弟兄宜子孫去不詳與前譜郭勳錢悉同子年新獲皆漢錢也



天清豐樂錢見前譜吳我鷗所藏清字不晰此則壽卿新得者



我宜子孫常樂未央錢四角四星圓孔背曲直文兼連珠亦似印紐錢特印失耳



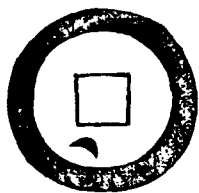
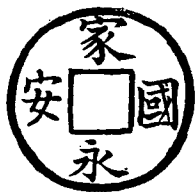
宜子孫錢上七星背長生左右雙鉤形二品亦壽卿藏甚精美
壽卿謂可作小漢器觀上環缺



辟兵莫當富貴未央錢見前譜此鉛質爲異下環亦缺



錢上宜酒食下樂無口六字向左書左七星及鉤形右工字加
二點背縱橫花紋不晰亦似漢製以上二品子年新獲



家國永安大錢背下斜月



天下太平錢見前譜此背銀錠壹廬異



一平安吉慶次歲朝把筆背百事大吉皆撒帳吉語之類唐宋以後物也



一合家歡樂背百世同居次万病不侵上有柄



一棠棣聯芳次五男二女見前譜此背七子團圓異



一福祿壽星合背錢次江山共老背日月同年



一連中三元次金榜題名背青雲獨步三面文同上背風雲際

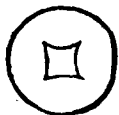


有有一字反書在左右或取富有之義

厭勝生肖



面酉生人下雞形背五萬貫向右書此生肖庫錢之類



一虎形方孔次犬形圓孔背作雲頭皆無字乃生肖之別種



此品雖無生肖形日本命生日則亦生肖之類子年所收生肖
錢種類殊多不復摹

神靈仙佛



一切聖賢圓孔次阿彌陀佛背慈悲方寸



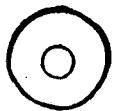
此品面文未解背符不識鍾麗泉藏謂卽伊滅靈撒之類外夷錢也



選仙錢面五絕一首泐五字背人執筆題詩像此種錢尙有大者式方長下橫列嗣功堂三字以狀不類錢不載

打馬錢

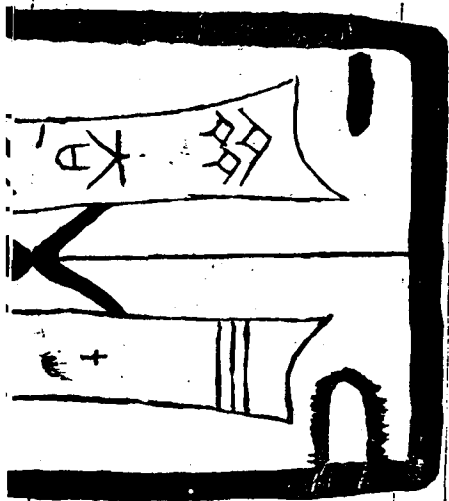


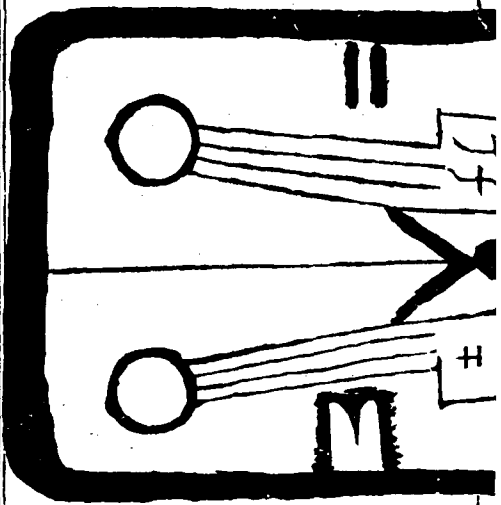


打馬格錢四品一什伐赤馬次白蹄烏馬三龍文外郭重輪背
俱馬形四馬形圓孔按馬錢劉燕庭所收最多兼有鐵者子年
所藏並吉語錢亦復不少以非正用品固無須備載矣

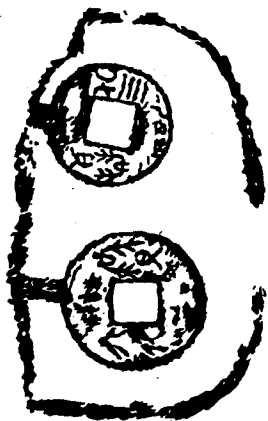
續泉匯貞集卷一

泉範



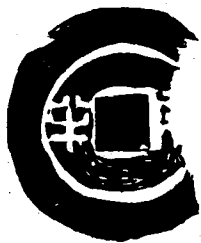


齊刀銅范見前譜茲品形製大小皆與前品同惟背文工字中
畫下方長出類土字倒書而左右丁竅牡牡相乘一在上一在
中在中者丁竅俱雙與前品異范背平無文不摹凡背平無文
者仿此按泉范最古者自齊刀始昔年惟劉燕庭有之歎爲希
世之珍今於同治丁卯青齊地又出此范爲陳壽卿所得並燕
庭舊范亦歸壽卿竟無獨而有對且二千餘年之物不知幾經
劫灰而兩美復合篆文形製毫無蝕損豈有鬼神呵護耶



寶三化寶六化殘銅範餘寶三寶六各一枚兩泉並列而顛倒
其文下缺幾枚不可知矣背無文省不摹此陳壽卿於濰邑市
肆殘銅中搜得者按前譜之寶六化範今亦爲壽卿所得又得

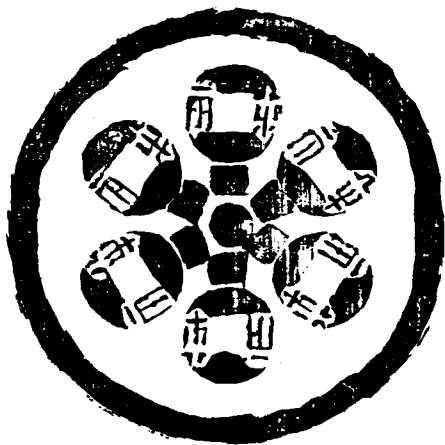
此范合之齊刀二范所見周范凡四今俱聚於一處真可謂極
宇內泉范之大觀矣



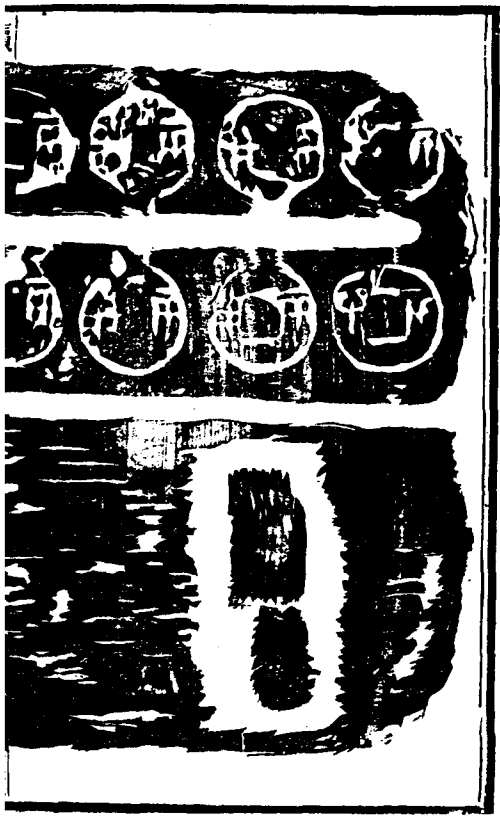
秦半兩殘土范大小二枚亦前人所未見此等土范乃經火煨
成者故前譜亦謂之甄范



漢高后半兩土范亦僅一見按泉范從古無徵自朱竹垞始斷
爲鑄泉之范然所見只王莽陽文銅范而陰文石范鐵范土范
仍未見也近於道光年長安出土甚夥皆兩漢六朝物標新領
異愈出愈奇多爲陳壽卿所收因備錄之以廣見聞 子年云
陰文土范易於作僞但此數范卻精



漢文帝無郭半兩銅范見前譜茲列陽文泉六枚爲異亦合土之範圍銅范前人或疑爲泉鏡殊不知鏡與范形製迥殊鏡之中必有紐紐有穿孔可繫緝繩范之中惟有柱並無紐范之中連於四面各有流道可通銅汁泉鏡則並無流道可通此形製之易辨者况鏡之緣與紐淺范之緣與柱深若淺則不能合土以鑄泉也此不得以范爲鏡之徵附記於此





半兩陰文銅范見前譜茲並列十二泉中通流道此無庸合土
卽以范鑄泉者背有一足隆起如履齒而中空與前譜有足五
銖范同

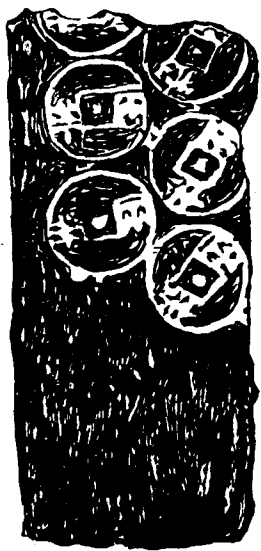


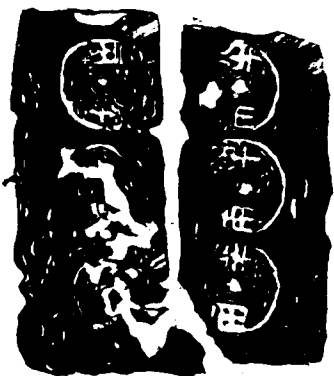
半兩殘石范見前譜石范皆陰文當以石屑合土而成者其堅
類石故以石范名之茲僅餘三泉又半泉背有石花紋



亦殘石范同前茲僅存四泉

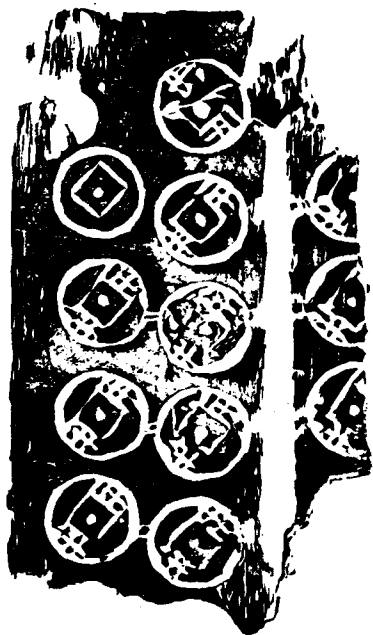
亦殘石范同前尙餘四泉又不完者二泉





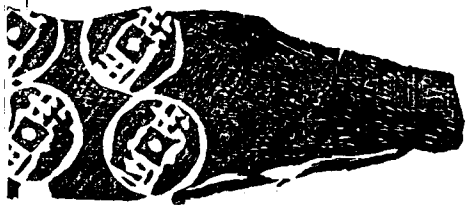
亦殘石范同前尙餘四泉模糊不完面背俱中通流道







亦殘石范尙餘九泉又不完者三中通流道背有石花紋





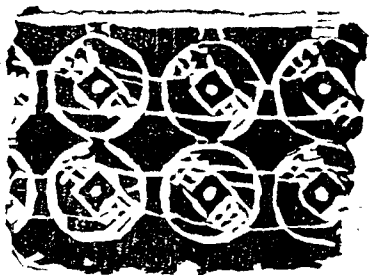
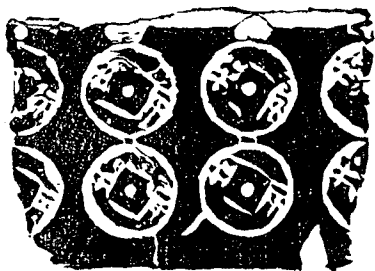
亦殘石范尙餘十泉又不完者五泉中通流道凡有流道之范
皆以銅汁灌入卽成泉無庸合土者



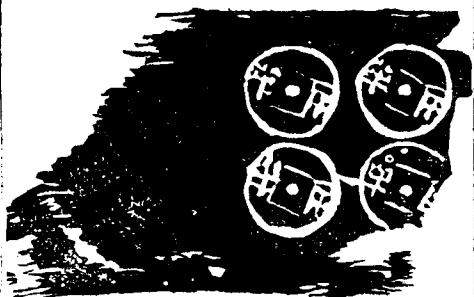
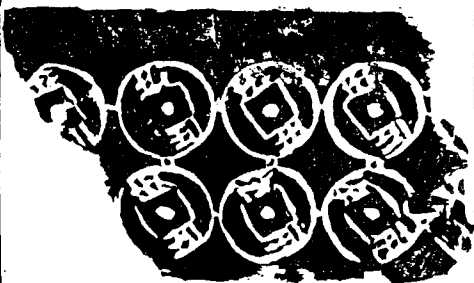
亦殘石范同前尙餘八泉又不完者三



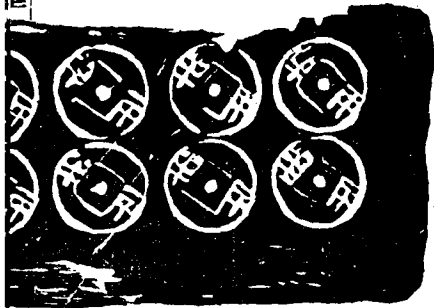
半兩合背同文殘石范面背各餘四泉合背泉時有之合背范則創見



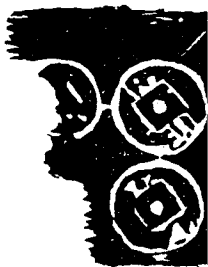
同前面背各餘四泉又四半泉



同前面餘六泉又半泉一背餘三泉又半泉一



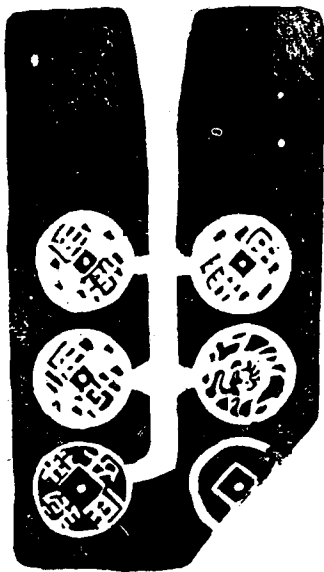
同前面十泉不完者三背四泉又半泉



同前面餘二泉背半泉石泉書屋所藏乃壽卿所贈



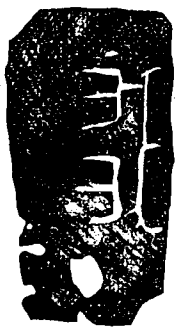
同前面餘兩泉又五半泉背餘兩泉又六半泉半兩兩面有文
者只見此六範從來著錄家所未有也





亦半兩石范面分列六泉中通流道其三上下作六小橫畫鑄
成當似小穿餘二一作千秋半兩一作龍文一無文此三種或

疑幕文愚意非幕也半兩背皆平此范有流道但用銅汁灌入覆以平板泉卽成其千秋龍文殆此泉兼厭勝者歟無文半兩余尙有之餘皆未見然有此范必有此泉獲古之緣俟諸異日

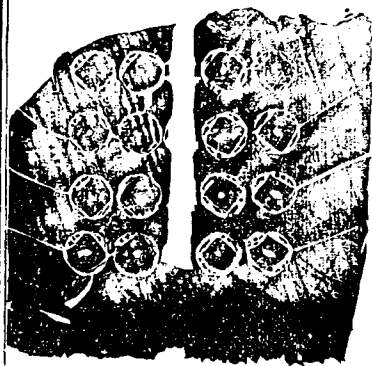


同前面餘二泉亦通流道背萬字缺下半按范底有字莽泉屢見西漢以前范傳世旣少底有字者僅覩此品此固當世藏泉

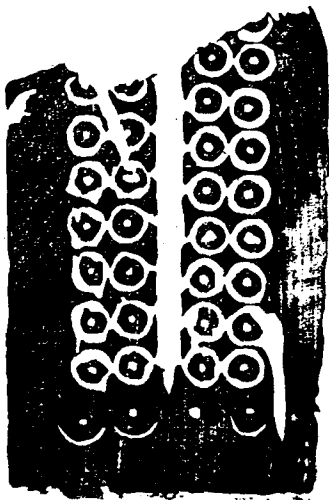
家所未見亦從古著錄者所未聞也以上半兩范各奇品於同
治己巳年濰東出土盡爲陳壽卿所得



榆莢半兩殘石范左右尙餘三行共六泉又不完者五泉中通
流道背亦似流道不可解



亦半兩莢泉殘石范尙餘四行十六泉又不完者二泉中通流
道字已半泐背有石花紋



同前尚餘四行二十八泉又模糊及不完者七泉形製益小中
通流道字已全泐





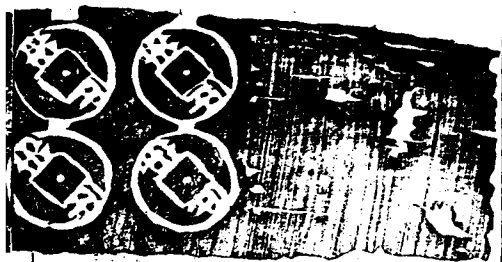
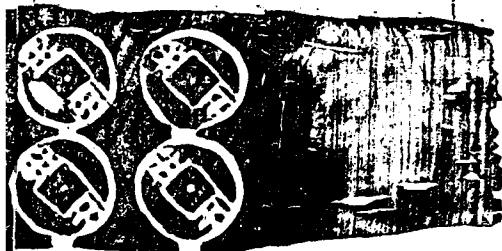
亦半兩莢泉殘石范尙餘八泉又不完者四泉字全泐流道雙
行爲異背四銖半兩五泉僅有一完全者中通流道一行如常

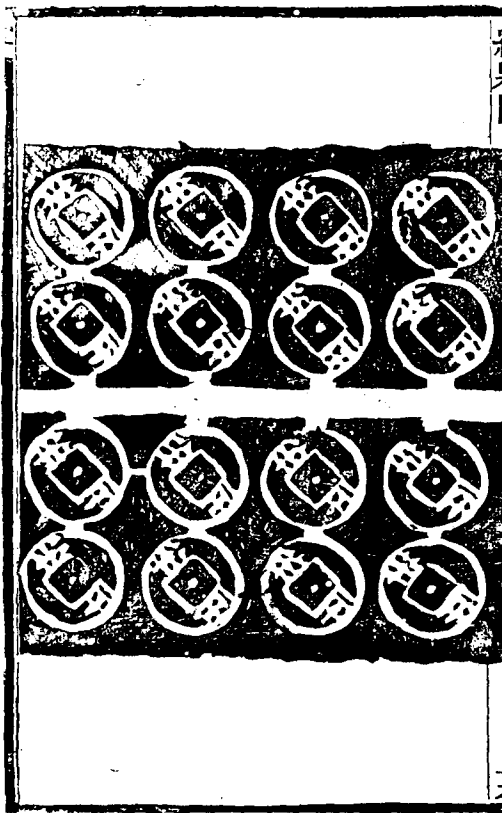
品石范兩面有文者舊譜未見若兩面兩種泉者更所未聞也



同前尙餘十泉又不完者二泉字亦全泐背四銖半兩二泉中
通流道四旁均有出文尤異按兩種泉同出一範理不可解疑
是英泉既廢之後卽於範背改刻四銖半兩者茲二範皆萊州
近年出土真可謂地不愛寶矣亦悉爲壽卿所得

補遺

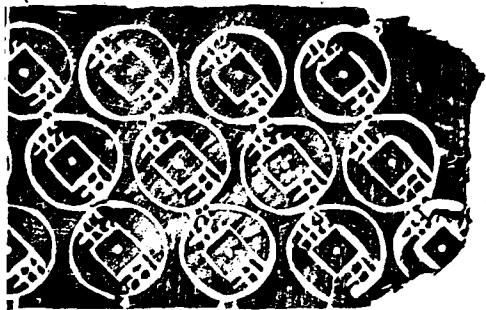






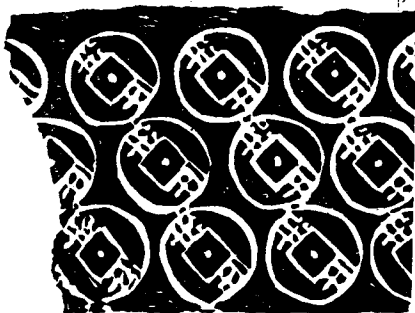
同前四行共二十八泉中有流道分兩段摹之按半兩石范大
率殘缺子年續得此范獨完整乃葉文東卿故物出自燼餘亟
拓附後

1917-18

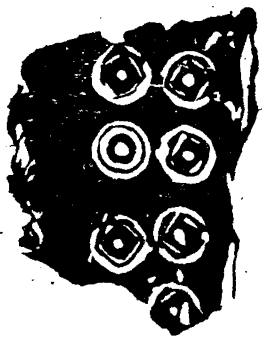


1917-18

亦半兩殘石范尙餘三行二十一泉又不完者三泉旁有流道



以上石范皆以石屑合土成之者似石非石故陳壽卿仍呼爲
土范獨子年此范則確然堅石厚一寸餘特補載於末



亦英泉殘石范尙餘六泉又不完者一字全泐背四銖半兩一
又不完者四與前所載同亦壽卿新獲再附卷後



續泉匯貞集卷三

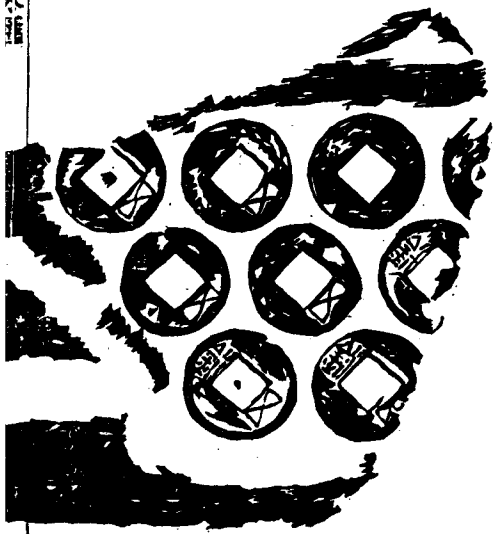
泉鑑



本台
四
年
日

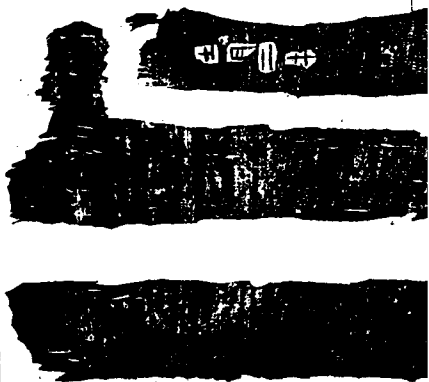
漢宣帝五銖殘土范泉形已缺僅餘上款本始四年十月丁下
有缺字反書前譜載本始元年二范與本始三年二范因其泉
缺略不摹今合觀諸殘范雖缺泉形確屬五銖范無疑故仍存
之以備格

Image of the
1000 Yen Note



貞三十一

同前尙餘陽文六泉又三半泉款餘地節二年字尙隱隱可辨

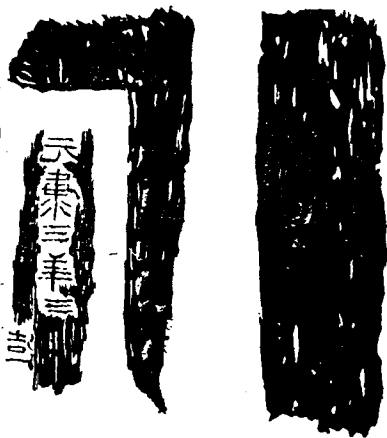




同前僅餘陽文半泉款地節二年十月口口造



同前泉已缺款餘地節四年十月六字下不斲

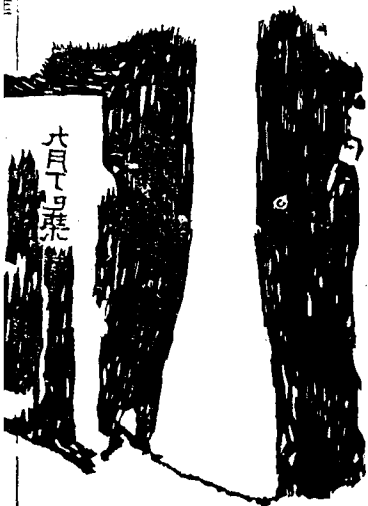


續見匪

廣三



宣帝元康殘土范見前譜此范泉已缺款一行作元康三年三
下有缺文又有造字二行作二月丙子下不晰俱反書



六月丁酉

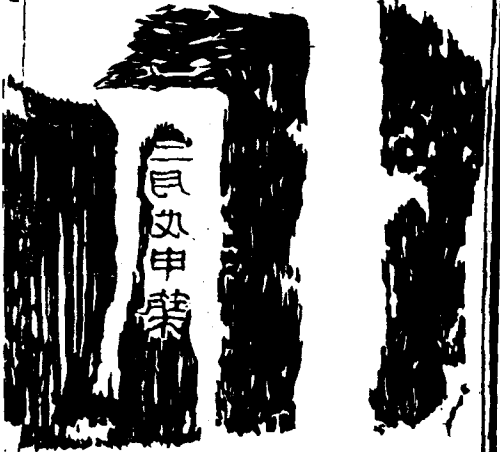
宣帝神爵二年四月壬午造

宣帝神爵二年四月壬午造九月丁巳築
見前譜茲泉已盡缺款餘二行日神爵二年



同前尙餘陽文八泉又不完者六泉上款二行半神爵四年四月丙辰造三月癸巳築又一甲字





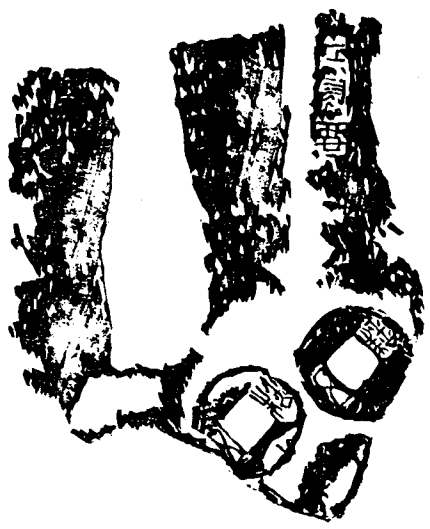
五銖殘土范泉已缺尙餘二月戊申築五字反書



同前泉亦缺尙餘九月丁口築五字反書



同前泉亦缺尙餘款年八月甲寅造六字反書上多一年字而
年號及年數仍缺以上三殘范雖無泉形然字皆反書以宣帝
各土范對校形製亦無異當係同時之物故仍附於宣帝范後
不嫌武斷也又有海豐吳氏藏范泉亦缺上款餘八月丁未築
字與此三范形與字俱同從略不摹

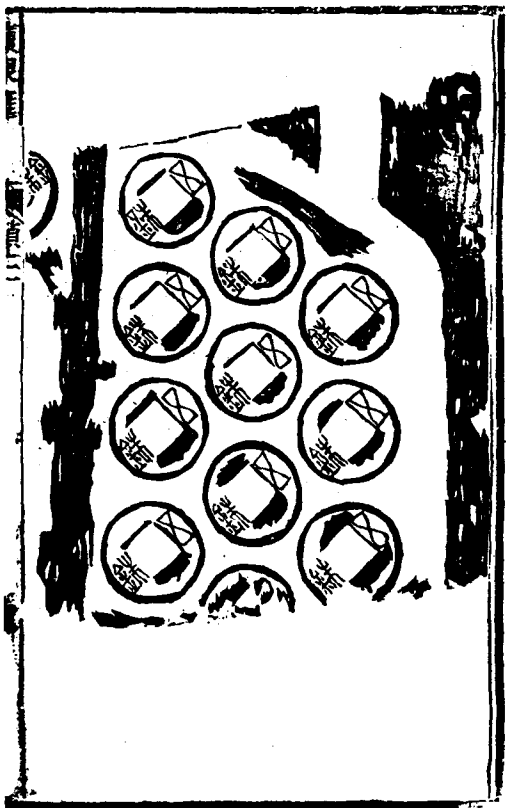




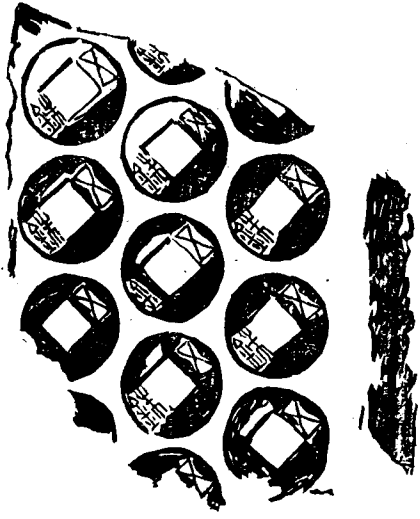


三范同前一餘二泉又半泉上款無年月惟工長壽三字次餘一泉又半泉上款工乘山三字殆禮所謂物勒工名以考其成者歟三餘二泉又二半泉上款工字下類王字不晰或亦人名餘字盡模糊不辨此等范泉皆陽文然無年代可稽幸與漢五銖諸范參考其字皆反書與宣帝泉范盡同又宣帝泉面穿上有一橫畫類好郭此諸范亦穿上一橫畫形製相同故知皆西

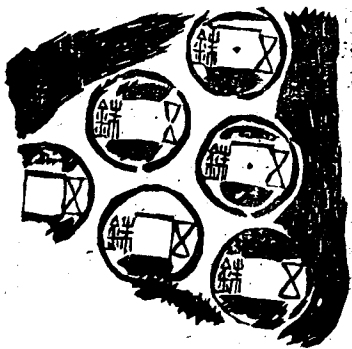
漢物

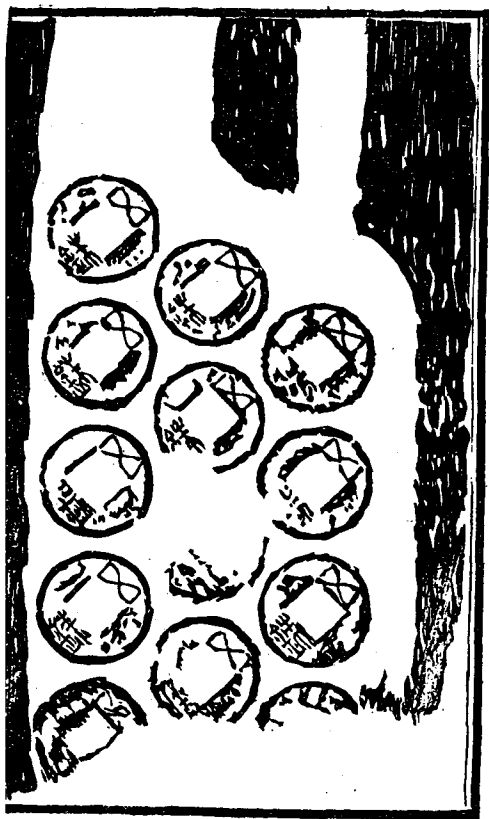




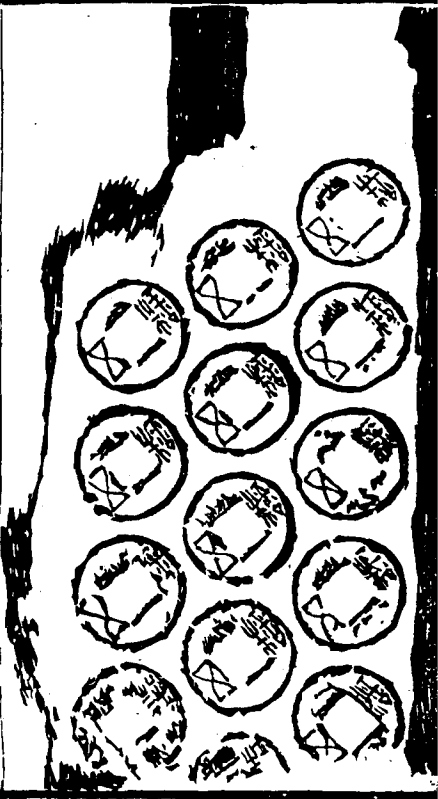


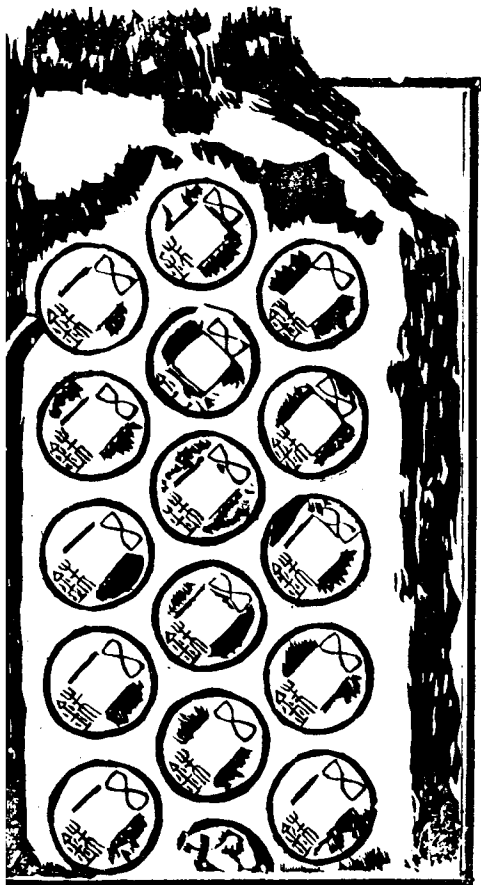
同前四殘范一餘十泉二半泉次餘四泉二半泉三餘八泉四
半泉四餘五泉一半泉皆穿上有橫畫自屬西京之制



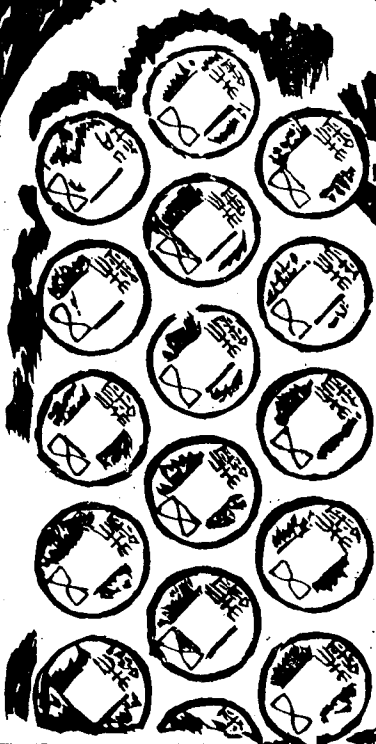


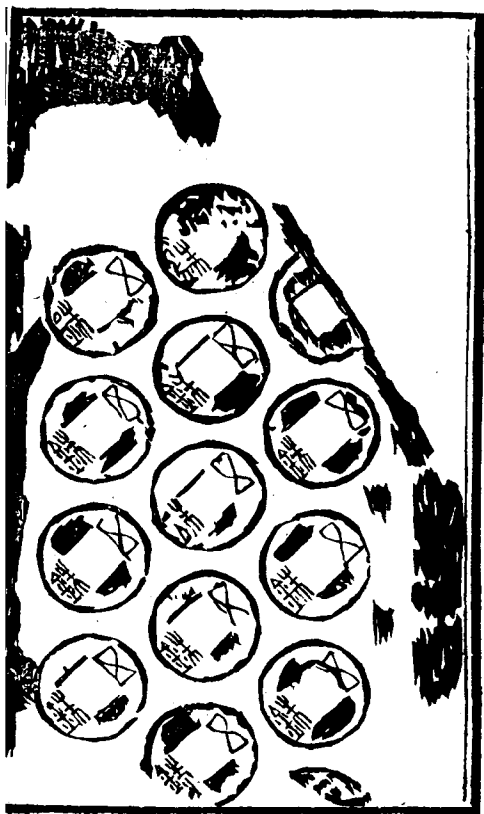
同前尙餘廿二泉又五半泉上段無字限於格未全摹
貞三十三



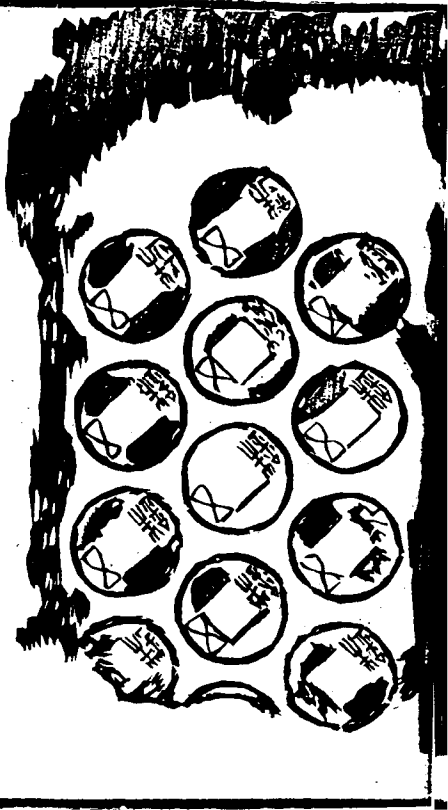


同前尙餘廿九泉又三半泉



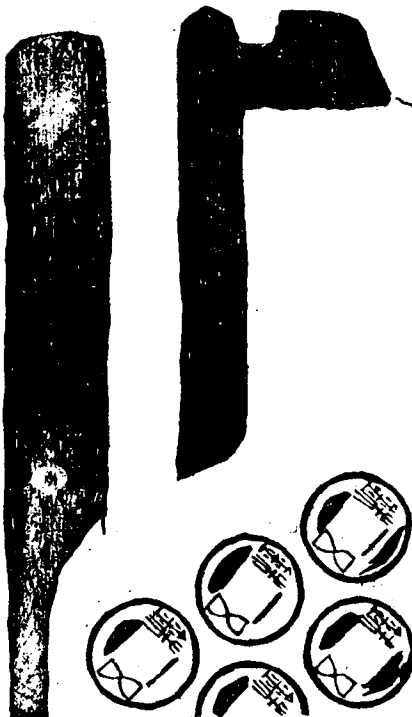


同前尙餘廿二泉又五牛泉

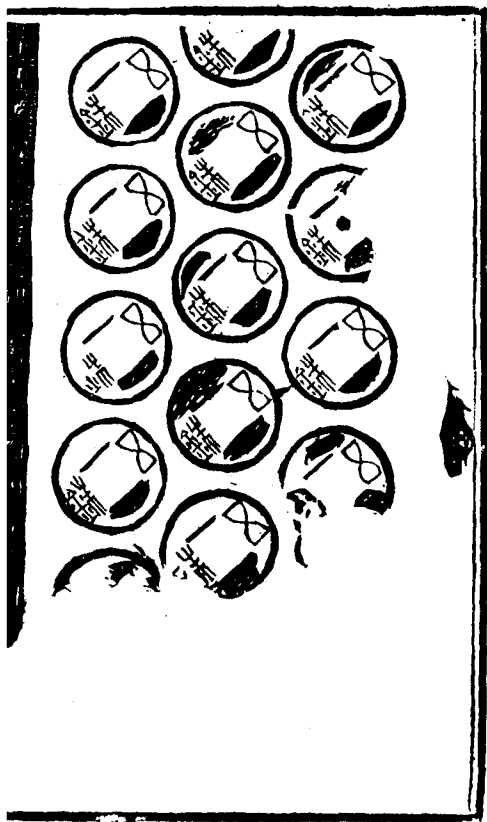


1955 7/20/55

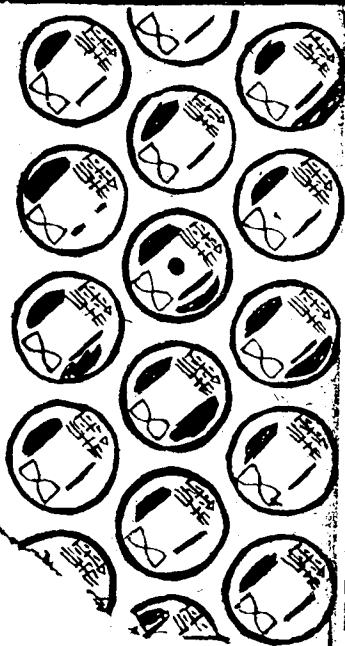


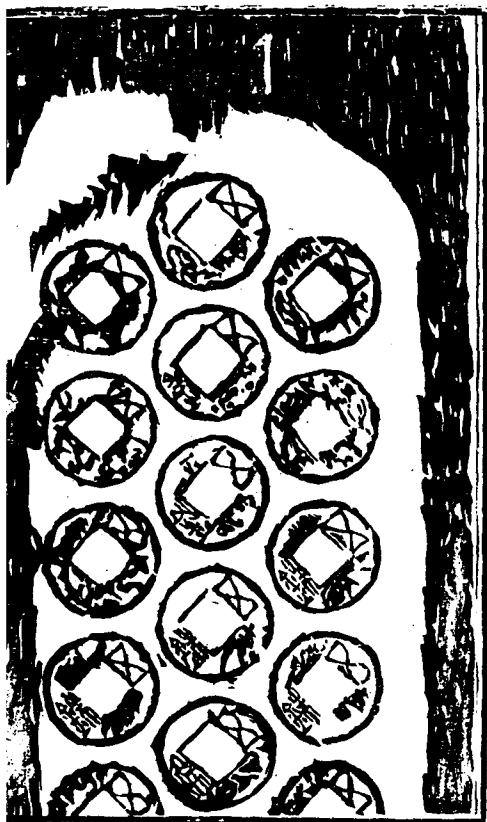


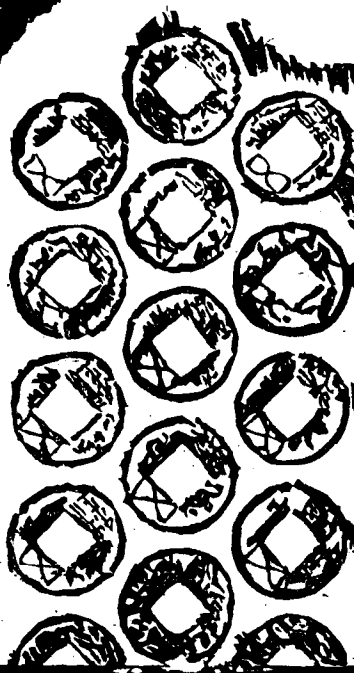
貞三六

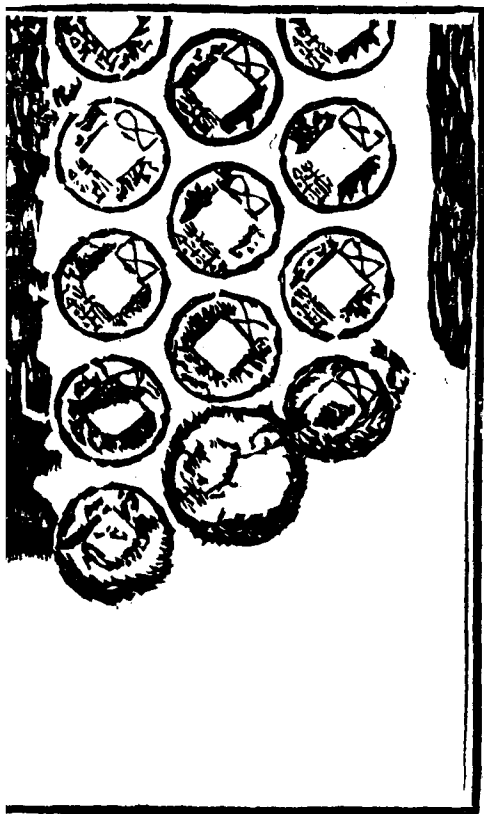


同前尙餘三十二泉又五半泉範式大分兩段摹之

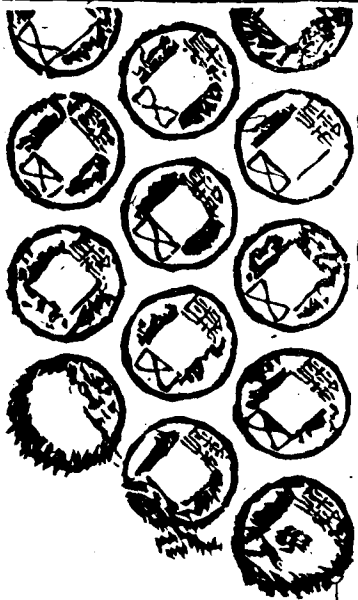


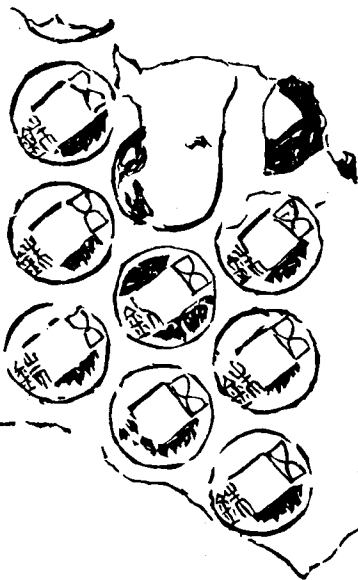




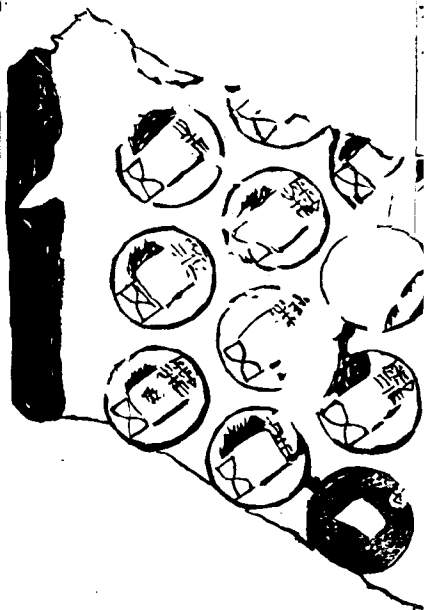


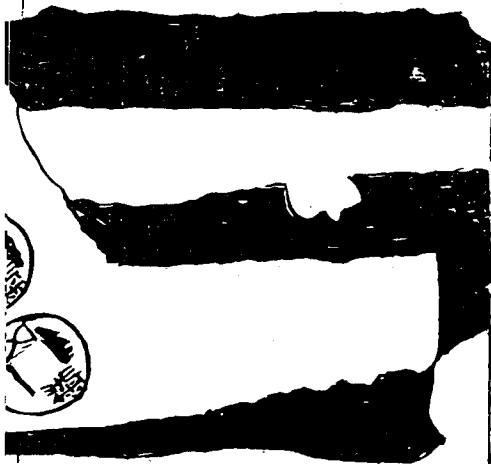
同前尙餘四十七泉又五半泉式大亦分兩段摹





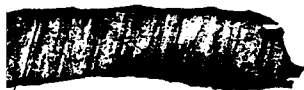
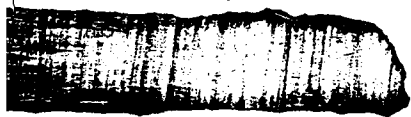
同前尙餘泉及不完者共廿二枚字多模糊然亦西漢泉

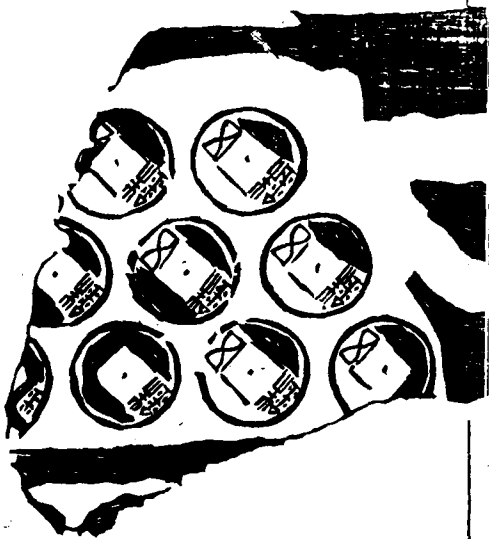


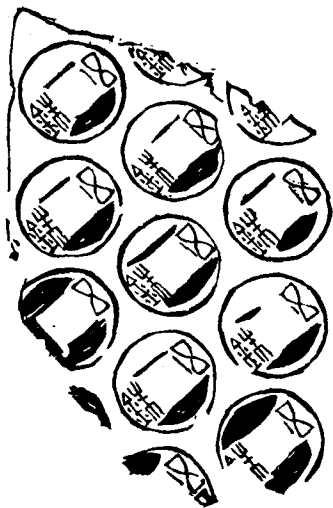




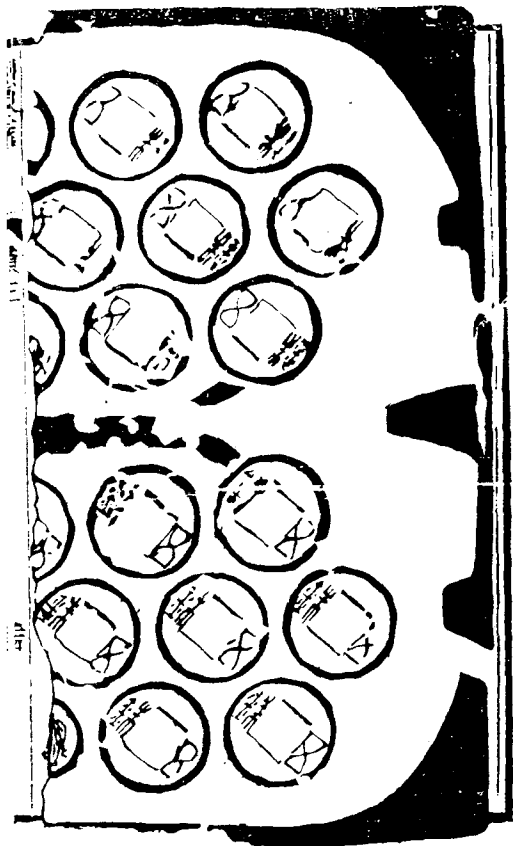
同前尙餘十三泉又一半泉共三行似大範之半





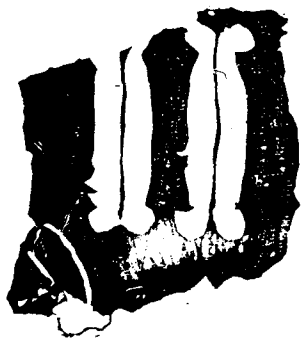


同前一存五泉又不完者四次存七泉又不完者五以上十三
範亦皆陽文須合土鑄泉者既無年號亦無工名難定時代然
制作與元康地節等範均同且穿上橫畫亦同故均斷爲前漢
之制



五銖銅殘范底有隆起橫梁想下段亦有一梁今不可見穿上
一橫畫自是西漢物此范後出卽附卷末





五銖陰文殘石范餘三泉又半泉背文殊異光緒紀元乙亥出
齊地爲壽卿所得拓寄墨本輒補載之